



MACQUARIE BANK HQ

NO. 1
MARTIN PLACE
SYDNEY
NSW

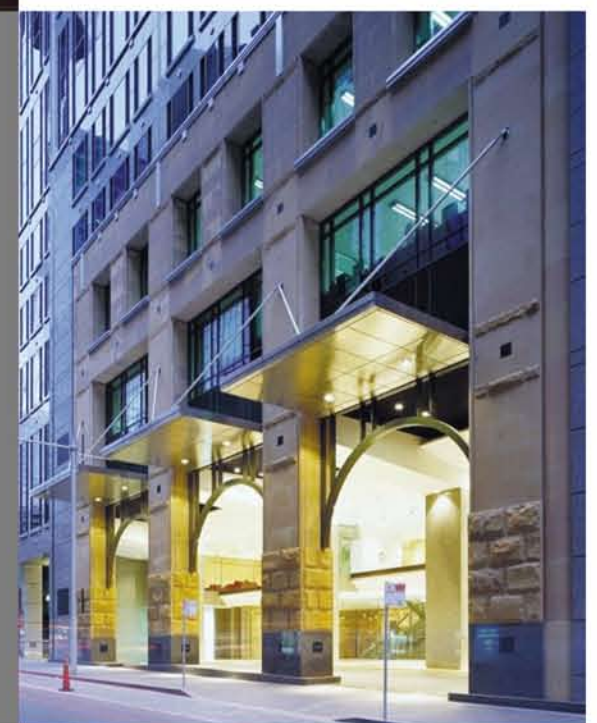
The \$700M redevelopment of No.1 Martin Place created a new benchmark for mixed use urban developments and a new civic precinct in the heart of Sydney.

The design integrates the landmark old General Post Office building with a contemporary, 26-level office tower Macquarie Bank Headquarters and the 31-level Westin Sydney Hotel tower and combines the three buildings around a glazed Grand Courtyard.

The two new towers provide a passive backdrop to the heritage building and allow for a diversity of uses. The design of the office tower has vigor, strength and visual interest, while the hotel, The Westin Sydney, has a more refined facade and is curved in a softer, more appropriate expression of its use.

The integration and diversity of uses is central to the success of the project. The blending of hotel, office and retail has created an Australian landmark which has re-focused the

AWARDS: 2001 Property Council of Australia
Rider Hunt Award
2001 Property Council of Australia (NSW
Division) Award
CLIENT: Grollo Group
VALUE: \$700M
COMPLETED: 1999



THE BUCHAN GROUP